

GLASS JUG ASSEMBLY

Instructions to assemble the glass jug

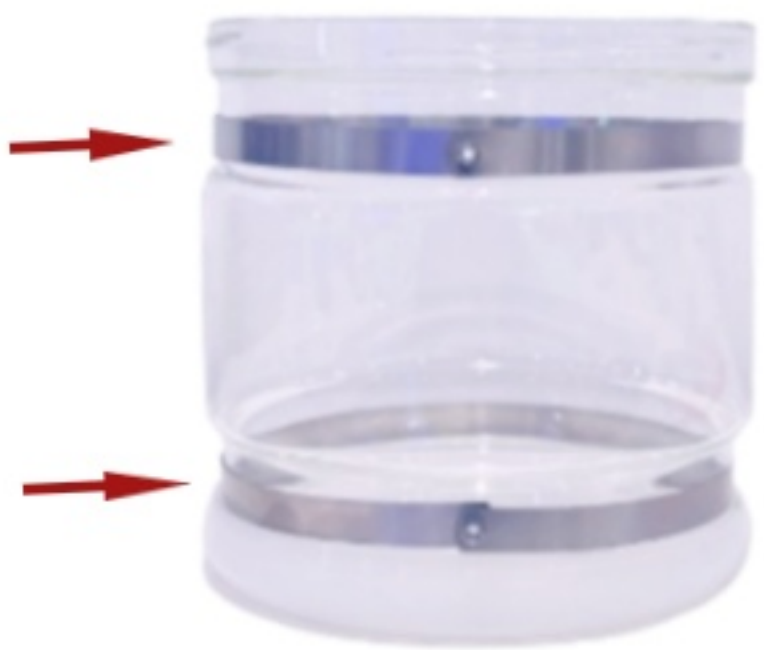
Ensure all parts are present:

- Glass Jug
- Handle (Inner Piece & Outer Cover)
- 2x Metal Straps
- 2x Screws



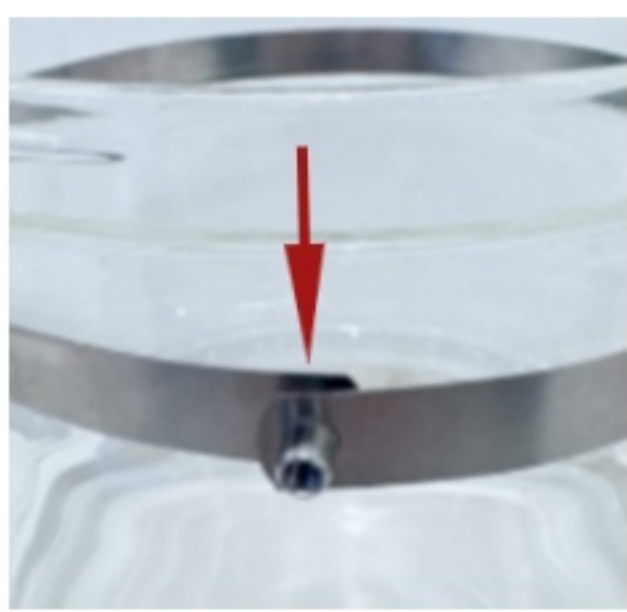
NOTE

The main lid can be unscrewed off. Do not pull or force.
There is a silicon seal under the lid, leaking will occur if this is removed.



Step 1: Attach the Metal Straps

Wrap the metal straps around the upper & lower recessed sections of the glass jug



Step 2: Secure the Metal Straps

Align the straps so the strap holes fit over the protruding nuts – ensure they are both lined up



Step 3: Position the Handle

Place the inner part of the plastic handle over the metal straps - ensure the screw holes line up with the protruding nuts



Step 4: Tighten the Screws

Insert the screws through the handle holes into the nuts, then tighten them securely - continue tightening until the handle feels secure



Step 5: Secure the Outer Handle Cover

Click into place the outer plastic cover over the handle